

# TREX FENCING AND GATES FOR COMMERCIAL APPLICATIONS

Leading Innovation in  
Composite Fencing



## Trex Fencing & Gates for Design and Function

Products selected for fencing will vary depending on the requirements of a project. Trex Fencing offers solutions for multiple applications. This gives architects and specifiers a product that meets construction requirements for fences or gates from opaque structures to semi-privacy screens. Trex Fencing can also be combined with other materials for a unique design flair or to meet a need.

In fencing, architects often face the challenge of finding a product that meets functional requirements while also providing the benefit of aesthetic appeal. Trex was designed specifically to merge the two elements. As expectations for design continue to evolve, buyers demand more from fencing than just security or privacy.

One of the primary objectives Trex took into consideration when developing the fence design was to move away from the concept of a front side and a back side. With Trex, both the users and neighbors benefit from a fence with an attractive presentation.

Trex fencing adapts to various heights. From 2' tall wall toppers to 12' tall sound barriers, Trex fencing is used in commercial applications to achieve the exact elevation needed. Trex fences are not made from pre-built panels which provides an advantage when the fence must be adapted to fit a space or needs to be shortened or heightened. While six-foot-tall is the most common height for a fence, commercial projects often require an eight-foot-tall fence for perimeters an even taller fence for HVAC equipment. Where necessary, additional steel post inserts and aluminum bottom rails give the Trex fence additional rigidity and durability over other materials.

**Trex elevates outdoor spaces with low-maintenance, high-performance, eco-friendly products. Trex fencing offers aesthetically pleasing, value-oriented solutions.**

### TREX COMPOSITE FENCING STYLES

## Trex<sup>®</sup> Seclusions<sup>™</sup>

COMPOSITE FENCING SYSTEM



*The Ohio State University - Columbus, OH*

## Trex<sup>®</sup> Horizons<sup>™</sup>

HORIZONTAL FENCE SYSTEM



*Supercharger - Bowling Green, KY*



*Fairfax Village Shopping Center, Washington, DC*

## Trex Seclusions® Vertical Design Upgrades the Traditional Fence

Trex achieves its appearance through a system of interlocking pickets. The simulated board-on-board design creates dimension and attractive shadow lines, and it ensures strength while helping the pickets retain their shape as the fence weathers.

Since its introduction in 2005, the Trex picket system has proven consistently to be the superior design. Flat boards in wood or other composite are affected by warping and shrinkage.

All other design elements merge form with function as well. The 5x5 universal posts are wider than the typical 4x4 wood post, giving them not only additional strength but a statelier appearance. The top rail which provides lateral strength to resist high winds (tested for 130 mph sustained / 147 mph in 3-second bursts for 6' tall and 100 mph sustained and 116 mph in 3-second bursts for 8' tall) as well as an attractive cap-and-trim look. The heavy gauge aluminum bottom rail provides the fence with tremendous vertical and lateral rigidity. When sleeved with the bottom rail covers, a consistent look with the composite pickets is achieved and the covers create a picture frame appearance in concert with the posts and top rails. Trex Seclusions does not require many fasteners to begin with and the few that are needed are well hidden.



*Love's Travel Stop - Donna, TX*



*Goddard School - Ellicott City, MD*



*Scale Station - Tulsa, OK*



*Wyndham Hotel - Niagara Falls, NY*



*Parking Lot - Chicago, IL*



*Bear Lake Marina - Garden City, UT*

## Trex w/Horizons™ Creates a Unique Horizontal Fence

Utilizing the same interlocking picket system that makes Seclusions a striking and durable fence, Trex with the FDS-exclusive Horizons steel frame system sets itself apart from all other horizontal fences.

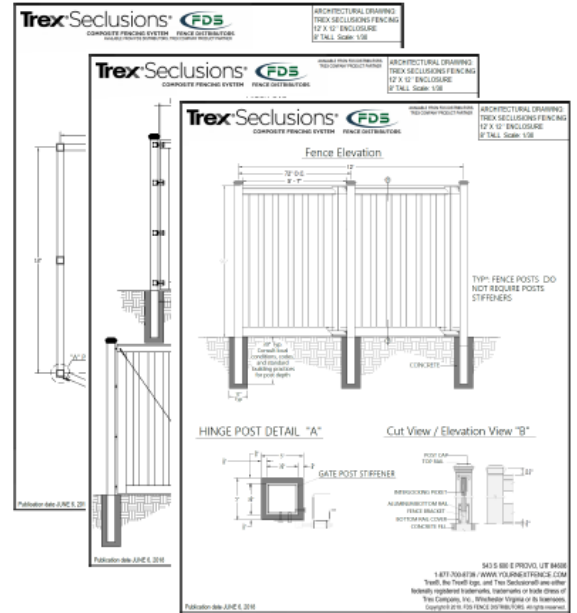
Wood fences in a horizontal configuration are usually constructed with boards on one side and posts on the other. The same is true when composite decking boards are used as horizontal planks. While composite decking boards are attractive and durable, they are not designed to be used as fence boards because their flexibility necessitates tight post spacing. That's why Trex created its fence system using interlocking pickets. This gives the fence the ability to span eight feet without needing additional support. Even wood fences will require a tighter post spacing because the boards tend to warp over a long span. The shape of the interlocking pickets in a Horizons fence significantly reduces the possibility of warping.

The galvanized and black powder-coated steel Horizons frame creates a contemporary look. The fasteners are subtle and match the frame color. By centering the panel between posts, the fence has a finished look on both sides. The patent-pending design of the frame system combined with the interlocking pickets give this fence its appealing dimensional and shadow line elements, and makes it unique in the fencing space.

# Enclosures and Dumpster Gates

In addition to using Trex fencing for perimeters, privacy screens, wall toppers, and landscaping design elements, it is commonly used for enclosures and dumpster gates in commercial applications. Almost all properties that are staffed by employees are required to have dumpsters and HVAC equipment or similar exterior units. Enclosing these spaces is often necessary from a security standpoint.

Trex contributes as a design element, turning a typically unattractive area into a pleasing feature. Additionally, Trex provides a value engineering alternative to finished masonry. Besides the initial outlay for a masonry wall, Trex is also significantly less expensive to repair than masonry and can be fixed quickly without the need for specialized equipment.



**Corporate Accounts.** Trex Fencing can also provide design consistency for multi-location corporations. For example, companies such as Love’s Travel Stops, Panera Bread, O’Reilly Auto Parts, and Walmart use Trex fencing because the established design of the system creates not just uniformity but also an efficient method to package and install the product. We work with companies and government agencies to establish service level agreements (SLAs) that provide a substantial advantage for configurations and budgeting.

## Matching Needs

The benefits of a Trex Fence are substantial. The following table will give architects and specifiers a good overview of those benefits compared to common configurations of other products.

Requirement	TREX	Wood	Vinyl	Other Composites	Masonry
Maximum Post Spacing	8'	4' - 8'	6' - 8'	6' - 8'	N/A
Heights up to 12 ft tall	✓				✓
No painting/staining	✓		✓	✓	✓
Rot-free, insect resistance	✓		✓		✓
Performs well against warping, cracking, splitting, chipping, etc.	✓				✓
Easy to repair	✓		✓		
Long-lasting, natural wood-like matte finish	✓				
Standard design is fully private (no gaps between pickets)	✓		✓		✓
25+ years of company and product longevity	✓				
Same look on both sides	✓		✓		✓
Manufacturer warranty	✓		✓	✓	
LEED point contribution	✓				
Recycled content	95%	0%	0%	<75%	varies
Green manufacturing	✓			some	
High wind load performance	✓				✓
Low-impact installation	✓	✓	✓	✓	

## A LEED-Contributing Product

The Trex composite formula and the company itself have been environmentally responsible since the beginning. Trex is a member of the U.S. Green Building Council (USGBC) and its products can contribute up to five LEED points to applicable projects.

Trex composites combine recycled hardwood fibers and polyethylene plastic film to comprise 95% of its content. Additionally, raw materials are acquired within regional sourcing criteria defined by the USGBC to minimize environmental impact, and the product provides exceptional performance in innovation.

### MATERIALS & RESOURCES:

Credit 4.1	Recycled Content: 10%	1 point
Credit 4.2	Recycled Content: 20%	1 point
Credit 5.1	Regional Materials: 10%	1 point
Credit 5.2	Regional Materials: 20%	1 point

### INNOVATION IN DESIGN:

Credit 1	LEED Innovation Credit	1 point
----------	------------------------	---------

*Trex products contain 95% recycled-content*

*Trex products contribute up to five LEED points to any structure*



**No trees** have ever been cut down to make Trex products



**400 million lbs.** of plastic film and wood are saved from landfills each year



Almost **100%** of factory waste is reclaimed



**No harmful chemicals** are used in Trex's eco-friendly manufacturing processes

## PRODUCT BENEFITS FOR SUPERIOR PROJECT PLANNING

Trex benefits projects with several elements that will appeal to architects and specifiers. Professionals looking for innovative, low-maintenance alternatives to wood and vinyl fencing as well as brick and finished CMU walls will find that Trex Fencing provides solutions for project needs. Here are some of the reasons why architects select Trex fencing for projects:

- Requires little to no maintenance (occasional cleaning as necessary); does not require painting or staining like a wood fence
- Designed for value engineering; Trex is typically less expensive than finished masonry walls
- Installs with less impact on a site than masonry; Trex does not require a large footer (something which a wall will require)
- Weathers well; it will not rot, splinter, crack, or suffer insect damage like a wood fence
- Lighter than composite deck boards on steel or wood framing
- Consistent design spec from the manufacturer (no design spec creep)
- Provides a softer, more natural appearance than a wall (this is important when landscaping and design elements are integral to a project)
- Designed with a unique board-on-board appearance (same look on both sides)
- Provides full sight obstruction for privacy and security, and some sound mitigation for reduced noise
- Manufactured in the United States
- Meets green building requirements; 95% recycled composite materials (contributes up to five LEED points)
- Performs longer with more durability than vinyl PVC

## UNIQUE ATTRIBUTES OF A TREX FENCE

- Interlocking pickets create full privacy without gaps
- Fence components make sloping or stepping easy
- Recycled materials help contribute to a greener environment
- High wind load capacity and all-season durability – the perfect fence in every part of the country
- Natural looking colors are sustained throughout its life even as the fence weathers
- Fence posts can be used with iron, wood, or vinyl (they won't warp or rot, are highly durable, and will add a design flair)



*Our Lady of Fatima School – Lafayette, LA*



Engineering What's Next  
in Outdoor Living™



CONTACT US

**FDS Fence Distributors**

877-700-8739

[FDS@TrexFencing.com](mailto:FDS@TrexFencing.com)

MORE INFORMATION [www.TrexFencingFDS.com](http://www.TrexFencingFDS.com)

Trex®, the Trex® logo, and Trex Seclusions® are either federally registered trademarks, trademarks or trade dress of Trex Company, Inc., Winchester Virginia or its licensees. HORIZONS™ Horizontal Fence System is a trademark of FDS Fence Distributors. Patent pending. Copyright © 2020 FDS Fence Distributors. All rights reserved.